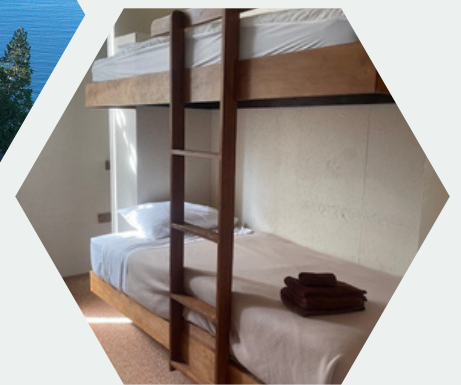


BMSC ACCOMMODATIONS

Bamfield Marine Sciences Centre
Your ocean-campus accommodation

www.bamfieldmssc.com



2026

100 Pachena Rd, Bamfield,
British Columbia, Canada, V0R1B0



Table of CONTENTS

01

The Cabins

A cozy place to settle in, with simple rooms and easy access to everything on-site. Ideal for: Visiting researchers, field teams, and instructors seeking a quiet, self-contained stay.

02

Buchanan Lodge

Casual lodging with shared spaces and an easygoing style. Ideal for: University students participating in courses, labs, and field schools. Conference and/or workshop participants, etc. Simple bunk-style rooms suited for larger groups.

03

Seaside Dorms

Simple bunk-style rooms suited for larger groups. Students and short-term program participants. Groups attending workshops, training sessions, or seasonal programs.

04

Director's Residence

Comfortable private rooms and a shared living space overlooking Grappler Inlet. Ideal for: Conference leaders or long-term visitors requiring privacy and comfort, hosted meetings or small, professional gatherings.

05

Questions?

Get in touch with us.



bmsc

BAMFIELD MARINE
SCIENCES CENTRE



University
of Victoria



THE UNIVERSITY
OF BRITISH COLUMBIA



SFU
SIMON FRASER
UNIVERSITY



UNIVERSITY OF
CALGARY



UNIVERSITY OF
ALBERTA

Accommodation

Where oceanfront living meets community, comfort, and discovery.

Bamfield Marine Sciences Centre offers year-round, on-campus housing designed to support researchers, university students, and visiting groups. All accommodations are just a short walk from laboratories, lecture halls, the cafeteria, and the waterfront—keeping you connected to both nature and campus life. Experience oceanfront living that supports learning, research, and meaningful connections.



01 The Cabins



Forest and ocean view



Sleep up to 10 guests



Up to 2 bathrooms



Kitchen in the unit



NOT pet friendly



Coin-operated laundry



Parking available



Complimentary Wi-fi

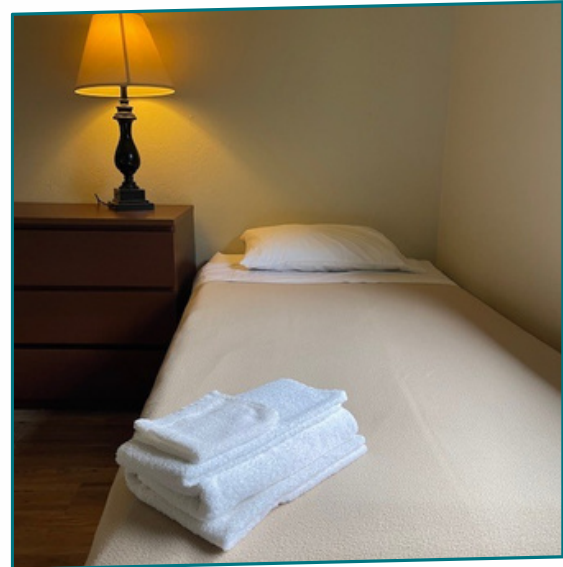
Overview

Nestled close to the laboratories, our eight fully furnished cabins provide private, apartment-style housing. Each cabin is a bit different but they are all complete with:

- Furnished living spaces
- Fully equipped kitchens
- Access to the nearby coin-operated laundry in the cafeteria complex
- Optional availability for visiting groups (based on scheduling)



Shared or private accommodation



Our cabins bedrooms are designed for guests to feel comfortable and at home while on campus. Each room offers a bright, well-organized layout with natural light and practical furnishings, creating a calm and welcoming space for daily living. Enjoy stunning views and an ocean experience from your desk, with storage for short or long-term use. There are 1-2 bathrooms per cabin.

Clean linens and bedding (pillow, sheet set, blanket, and comforter) and set of towels are provided. Hand soap and toilet paper are provided. You must bring all other toiletries.



Common living area

Kitchen

Cabins have shared kitchens. Kitchen equipment includes:

- Full-size stove and oven
- Refrigerator with freezer space
- Sink with ample counter space for food preparation
- Storage cabinets for kitchen items and supplies
- Microwave, kettle, toaster and coffee maker
- All basic cooking utensils (pans, pots, cutlery etc.)
- Salt and pepper, dish soap, sponge, garbage bags, coffee filters, dish cloths



Living Room

The living room is a shared space designed to help guests relax, socialize, and feel connected to the community.



Amenities

Laundry

A coin-operated laundry that accepts loonies is in the nearby cafeteria complex. It operates on a first-come, first-served basis. Washers are 4 cubic ft and take three \$1 coins and dryers take two \$1 coins (\$5 to wash and dry). You must bring your own detergent, dryer sheets, etc.



Forest-Side Lounge

The Forest-Side Lounge is the dedicated Research Lounge! Situated in the cafeteria, it is a hub designed to elevate the researcher and instructor experience at BMSC. Providing a space for working alone or collaboratively, meetings, creative conversations, idea sharing, and teamwork, this impressive facility combines flexible meeting space with a breathtaking ocean view.



02 Buchanan Lodge



Forest view



Sleep up to 98 guests



Shared washrooms



Complimentary Wi-fi



NOT pet friendly



Coin-operated
on site laundry



Parking available



Shared kitchen and
lounge

Overview

Buchanan Lodge is a comfortable dormitory-style residence located at the Bamfield Marine Sciences Centre. Designed to support students, researchers, and visiting groups, the lodge accommodates up to 98 guests. It provides a practical and welcoming living environment that supports both academic work and daily life at the Centre. If you have any accessibility needs, please reach out to our team to see if our living spaces and surrounding areas can accommodate them.



Shared or private bedrooms



The bedrooms are clean, bright, and designed for comfortable living. Each features solid-wood bunk beds with built-in ladders, providing a safe, space-efficient sleeping arrangement.

Each bed is prepared with a mattress and bedding (full sheet set, pillow, blanket, and comforter), allowing guests to settle in easily upon arrival. The rooms benefit from natural light through large windows, creating a calm, pleasant atmosphere.

The rooms each include a sink with a mirror and counter space, allowing guests to wash up and prepare for the day without leaving the room. Built-in storage cabinets, and a hanging closet provide space for personal items. Two desks by the window allow for a well-lit work space.

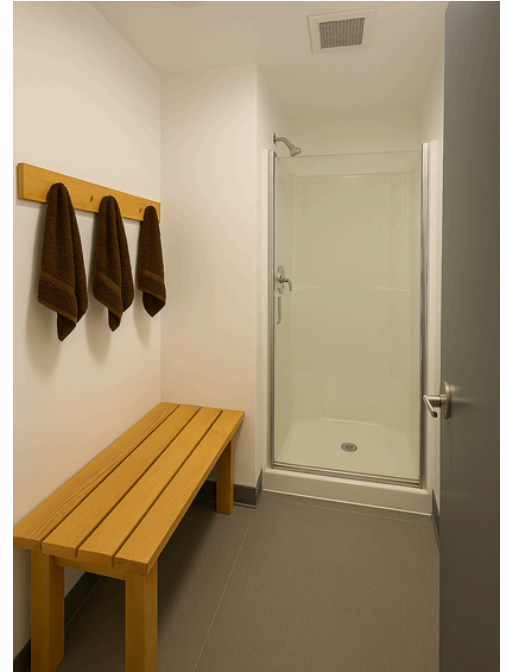


Shared facilities and amenities

Showers and washrooms

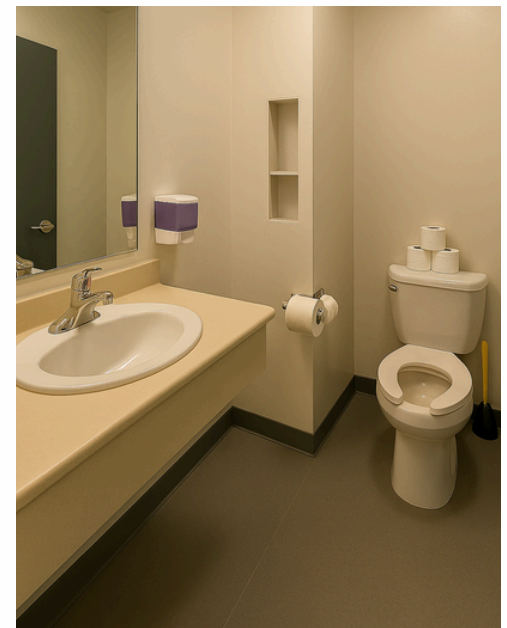
Showers and toilets are conveniently located on each floor and are maintained to support regular use by residents. Each floor has 2-4 bathrooms and 2-4 showers.

We provide hand soap, toilet paper, and paper towels. You must bring all other toiletries.



Linens and towels

Linen service – Clean bedding (bottom sheet, flat sheet, pillow cover, blanket and comforter), and towels – is provided for all guests staying at Buchanan Lodge. This allows residents to arrive comfortably without the need to bring these items from home.



Laundry

Laundry facilities are available on the ground floor. Please note that the laundry area is shared with housekeeping as part of regular residence operations. Guests are welcome to use the laundry facilities during designated hours from 4pm-9pm. Washers take three \$1 coins and dryers take two \$1 coins (\$5 to wash and dry). You must bring your own detergent, dryer sheets etc. If you need to use the laundry facilities during housekeeping hours, please contact us!



Common living area

Living Room

The living room is a shared space designed to help guests relax, socialize, and feel connected within the residence community.

There are also board games for guests to enjoy!



Kitchen

There is a single shared kitchen in Buchanan Lodge.

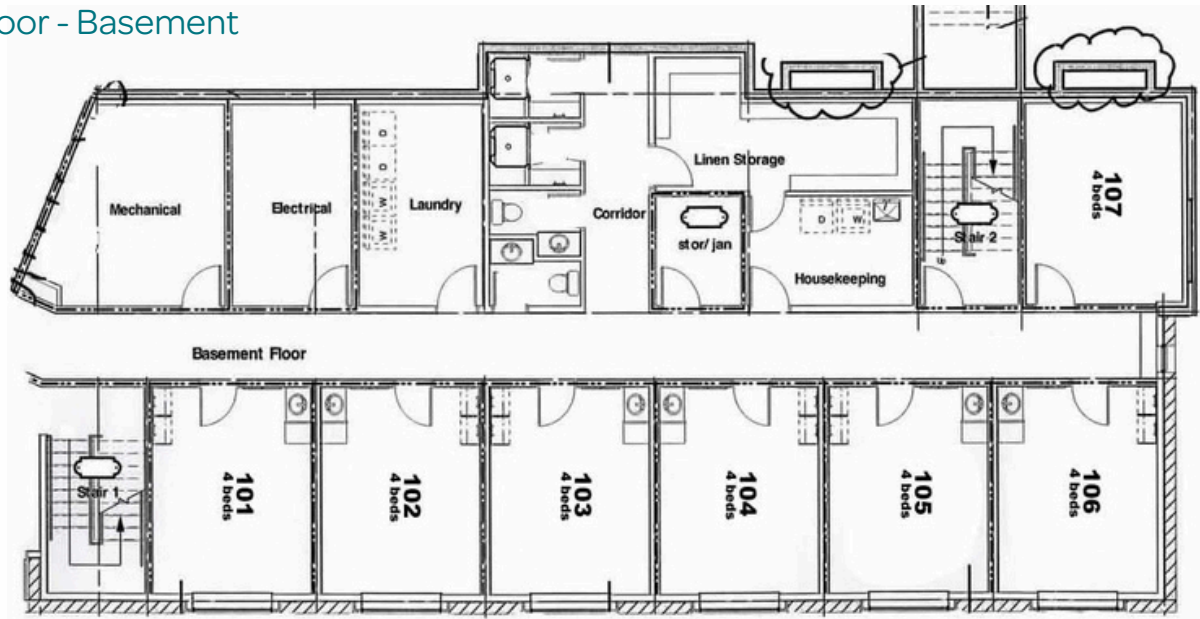
Kitchen equipment includes:

- Full-size stove and oven
- Two refrigerators with freezer space and a deep freeze
- Microwave, kettle, toaster and coffee maker
- Sink with ample counter space for food preparation
- Storage cabinets for kitchen items and supplies
- All basic cooking utensils (pans, pots, cutlery etc.)
- Salt and pepper, dish soap, sponge, garbage bags, coffee filters, dish cloths

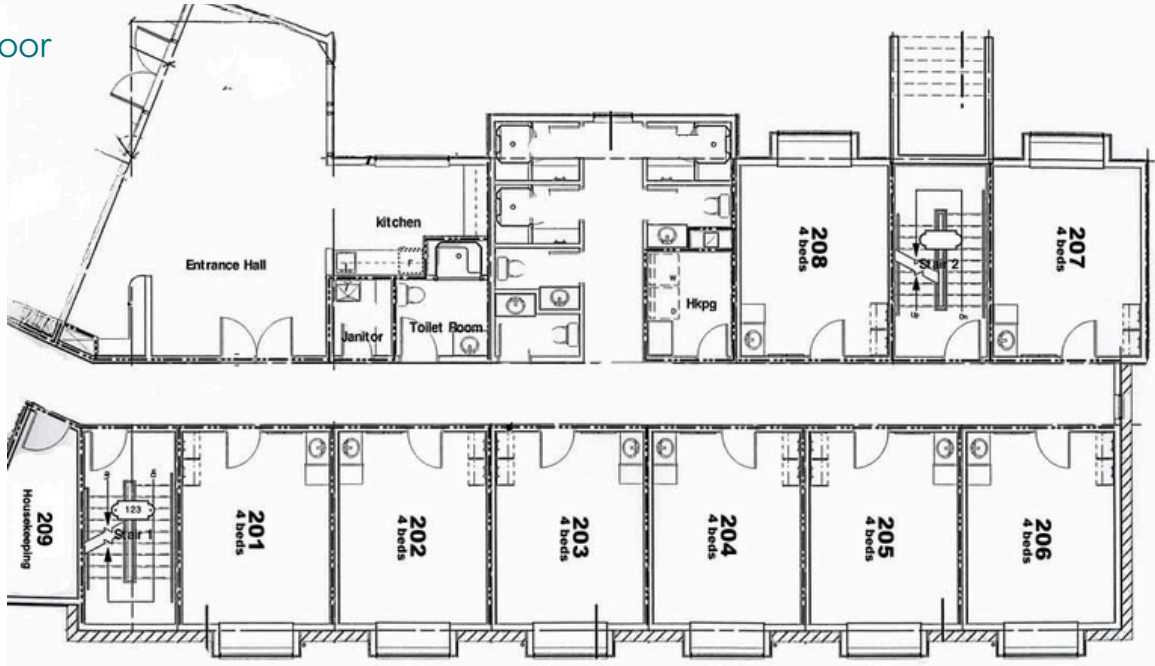


Floor plans Buchanan building

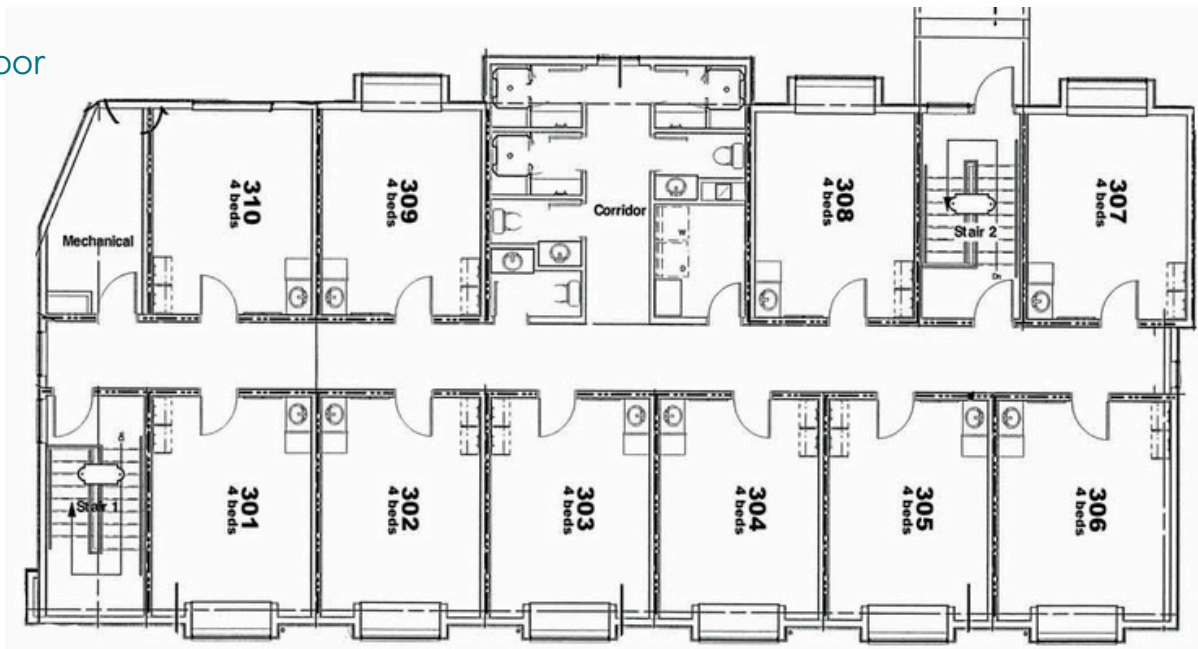
First Floor - Basement



Second Floor



Third Floor



03 Seaside Dorms



Forest and ocean view



Sleep up to 34 guests



Shared washrooms



Complimentary Wi-fi



NOT pet friendly



On site laundry



Parking available



Shared kitchen and lounge

Overview

The Seaside Dormitory provides bunk-house style accommodation. Each room is equipped with two bunk beds, and a shared washroom/shower space is located within each two-room half-wing. A communal, fully equipped kitchen is available, and a common living area is furnished with sofas, desks and chairs. Laundry facilities are available in the common area.



Shared or private accommodation



Each room is equipped with two twin bunk beds and features shelves for storage. Each room accommodates up to 4 people and includes access to shared washrooms and a shared balcony. The West and East wing are interconnected through a single twin bedroom, allowing for the option of a private room.

Linens, Towels, Toiletries

Clean linens and bedding (pillow, sheet set, blanket, and comforter) and set of towels are provided. Hand soap and toilet paper are provided. You must bring all other toiletries.



Common living area



Communal Kitchen

This spacious communal kitchen is designed to support short-term shared living in a practical environment. The open layout provides ample room for multiple guests to cook at the same time, making it ideal for daily meal preparation as well as social cooking.

The kitchen includes

- 2 stoves, 2 ovens, 2 microwaves, 2 fridges, and a deep freeze, kettle, coffee maker, toaster, and a dishwasher
- All basic cooking utensils (pans, pots, cutlery etc.)
- Salt and pepper, dish soap, sponge, garbage bags, coffee filters, dish cloths

Living Room

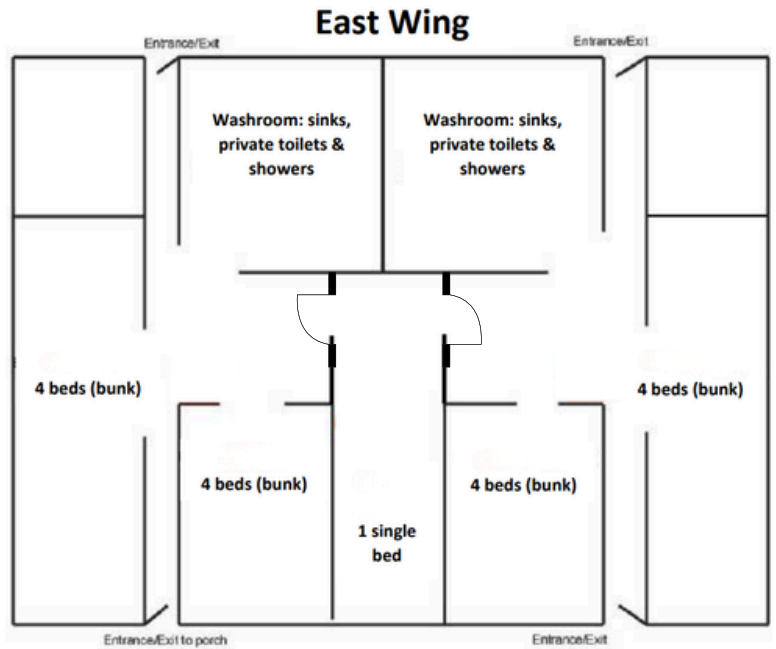
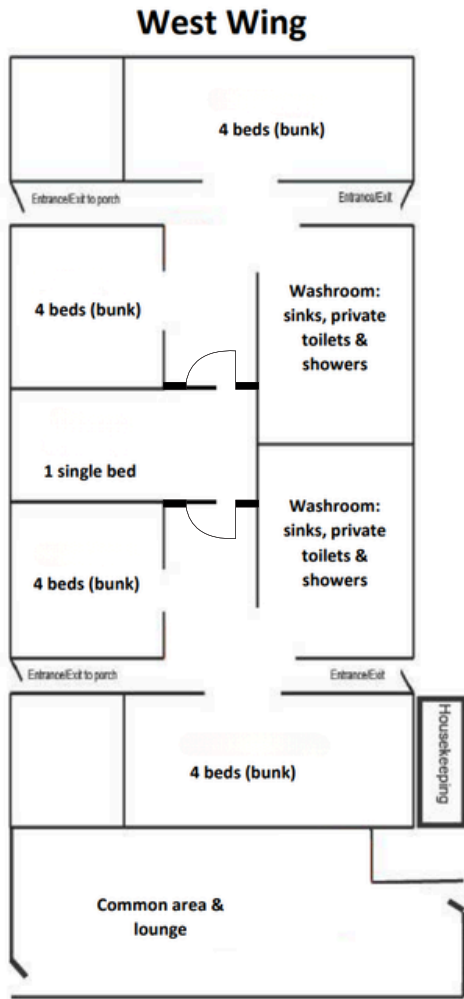
The living room is a shared space designed to help guests relax, socialize, and feel connected within the residence community.

Laundry is available in this facility (1 4cb ft. washer and 1 dryer, no coins required) you must bring laundry detergent, dryer sheets, etc.. There is a small toilet here as well.



Floor plans Seaside Dorms

Seaside Dorms Capacity: 34 beds total



04 The Director's Residence



Forest and ocean view



Sleep up to 9 guests



3 bathrooms



Kitchen in the unit



NOT pet friendly



On-site laundry



Parking available

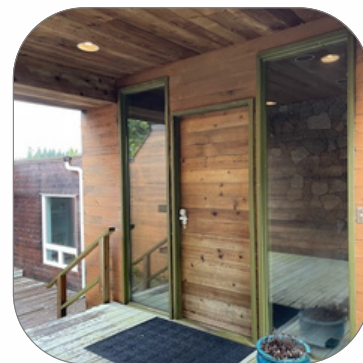
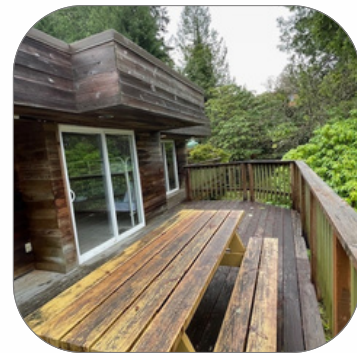


Complimentary Wi-fi

Overview

The Director's Residence offers a quiet, well-appointed retreat on campus—ideal for guests who need comfort, extra privacy, and easy access to Centre activities. If you are interested in staying in this space, please contact us, as it is highly subject to availability.

- Furnished living spaces
- Fully equipped kitchens
- Optional availability for visiting groups (based on scheduling)



Shared or private accommodation



The Director's residence offers:

- Private entry with covered porch and secure door access
- Comfortable bedroom(s) with hotel-style linens and a peaceful forest outlook
- Spacious deck with picnic table for informal meetings or outdoor meals



Common living area

Living Room and Dining

The living room and dining room are shared spaces designed to help guests relax, socialize, and feel connected within the residence community. Both are very spacious and furnished. They make a perfect space for gatherings!



Kitchen

This residence has one kitchen. Kitchen equipment includes:

- Full-size gas range
- Refrigerator with freezer space
- Sink with ample counter space for food preparation
- Storage cabinets for kitchen items and supplies
- Microwave, kettle, toaster and coffee maker
- All basic cooking utensils (pans, pots, cutlery etc.)
- Salt and pepper, dish soap, sponge, garbage bags, coffee filters, dish cloths

Linens, Towels, Toiletries

Clean linens and bedding (pillow, sheet set, blanket, and comforter) and set of towels are provided. Hand soap and toilet paper are provided. You must bring all other toiletries.



Questions?

Our team is here to help!

General Inquiries:

(250) 728 3301 / info (at) bamfieldmsc.com

Guest Services:

Veronica Zurita

(250) 880 5227 / Vzurita (at) bamfieldmsc.com



Photo: Andrew Hendry

